

TRITEC

ENERGY FOR A BETTER WORLD

TRI-STAND

The smart insertion system for
PV systems on standing seam sheet metal.

- 
- simple
 - quick
 - efficient

The main advantages:

- Floating rooftop system, therefore no thermal separation necessary
- Low material requirements due to single-layer rail system
- Simple, quick and efficient installation
- Considerable time and thus cost saving
- Optimum load distribution and stability
- Suitable for all common framed solar modules

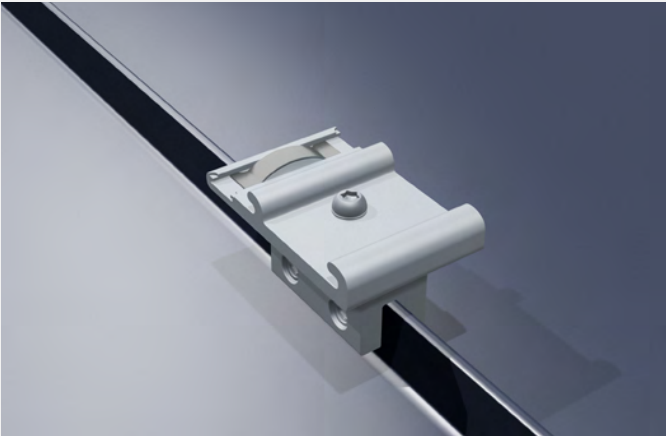
www.tritec-energy.com

TRI-STAND FOR STANDING SEAM SHEET METAL

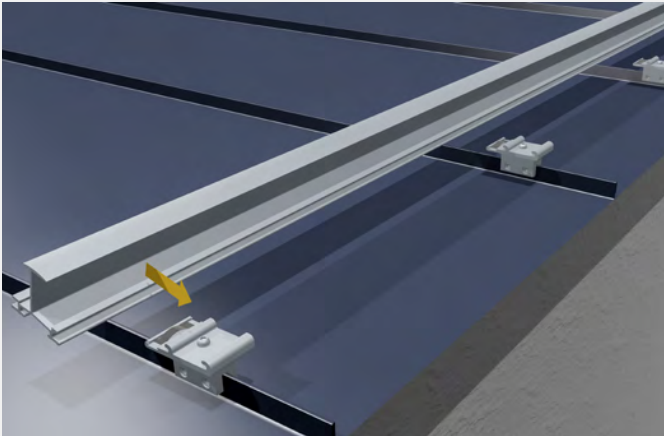
This way you easily increase your efficiency

Realize your projects in an unbeatably short time: The smart planning software, the few components and the patented SafeClick assembly enable an extremely quick, safe and simple installation of the PV insertion system TRI-STAND on the roof. The PV modules are easily inserted into the insertion profiles and are held in place by their own weight. Additional fastening of the modules is completely unnecessary.

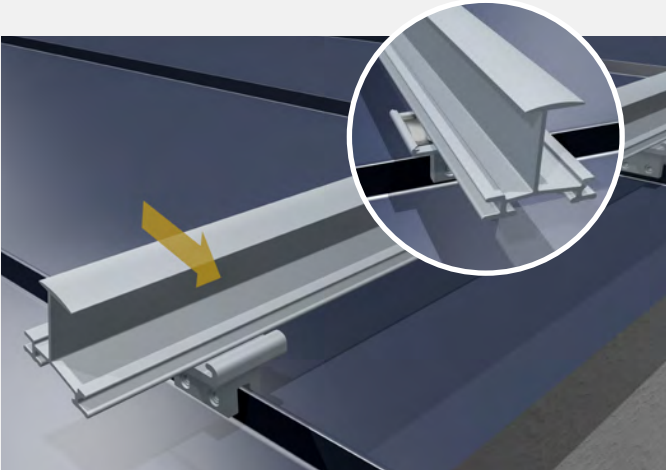
TRI-STAND is installed in just a few steps



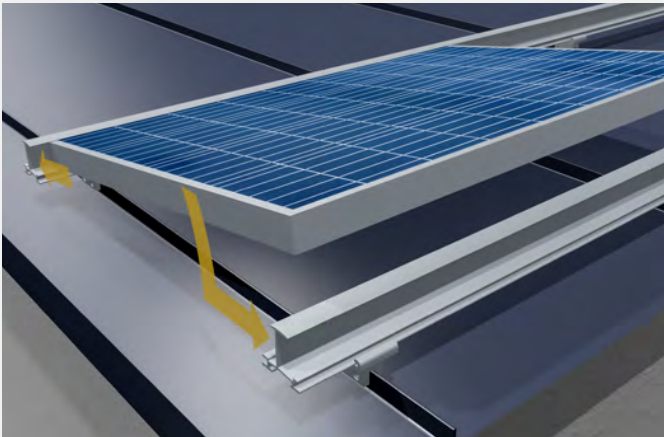
1. Mounting SafeClick
The tried and tested SafeClick is mounted directly on the standing seam, including the M8 standing seam clamp.



2. Place the SafeClicks in a row
Fit the SafeClicks including standing seam clamps in a row, complete assembly and fit the insert profile in place.



3. Clicking the TS insert profiles into the SafeClick
The insertion profiles are clicked into the SafeClick and are floatingly connected to the roof. Damage to the roof and module caused by thermal expansion is thus avoided.

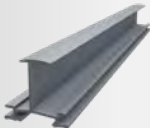



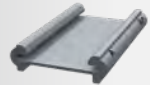







4. Inserting the modules into the TS insertion profiles
The modules are inserted into the insertion profiles and are held in place by their own weight - there is no need for additional fastening.

THE SYSTEM COMPONENTS

Extremely fast assembly with few components

With TRITEC you have the choice: Many components of the PV insertion system TRI-STAND are available in the color selection „blank“ (aluminum silver) and „black“. Completely tailored to your needs: The profiles and variants marked with * are available in different lengths on request.

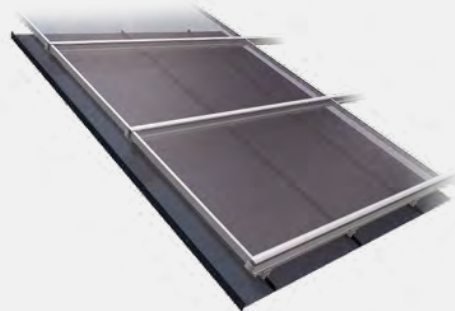
			
TRI-STAND insertion profile, blank Standard	TRI-STAND insertion profile, black Standard	TRI-STAND end profile, blank Optional	TRI-STAND end profile, black Optional
• Variants: TS-30/32/35/38/40 • available in different lengths*	• Variants: TS-30/32/35/38/40 • available in different lengths*	• Variants: TS-30/32/35/40 • available in different lengths*	• Variants: TS-30/32/35/40 • available in different lengths*
			
TRI-STAND insertion profile connector TS-C, blank Standard	TRI-STAND insertion profile connector TS-C, black Standard	TRI-STAND end bracket TS-E, blank Standard	TRI-STAND end bracket TS-E, black Standard
• Item no.: 1502216	• Item no.: 1502417	• Item no.: 1502214	• Item no.: 1502307
			
TRI-STAND double standing seam clamp up to 7 mm, blank Standard	TRI-STAND Edge Clip cable fixation Accessories		
• pre-assembled incl. SafeClick • Item no.: 1503183	Item no.: 1502246		

* Information on lengths and part numbers on request

LEARN MORE

Videos, planning and contact

TRITEC



Simply scan the QR code or visit the following link to get more information about TRI-STAND for standing seam sheet metal, such as installation video, installation instructions and references.

www.tritec-energy.com/en/pv-mounting-systems/standing-seam-sheet-metal/



Just scan the QR code or visit the following link to watch the training video on our TRI-DESIGN planning software.

www.tritec-energy.com/en/training/tri-design-basic/

The optimal mounting solution for every roof

TRITEC mounting systems combine over 30 years of photovoltaic experience. Our own products TRI-STAND, TRI-ROOF+, TRI-CLIP and TRI-FLAT Easyspeed offer optimum PV mounting solutions for the various requirements of different roof types and alignments. We attach great importance to the high-quality processing of the components as well as to the durability of the substructure.

Further information and the download of the assembly instructions you will find on our homepage www.tritec-energy.com.

Or just talk to us directly. Our experts are at your disposal to answer all your questions.

Contact

info@tritec-energy.com
www.tritec-energy.com